

**2003-06 ACCESSORIES & EQUIPMENT**

**Bumpers - MDX**

**FRONT BUMPER REMOVAL/INSTALLATION**

**2003 MODEL**

**NOTE:**

- **Have an assistant help you when removing and installing the front bumper.**
- **Take care not to scratch the front bumper and body.**
- **Put on gloves to protect your hands.**

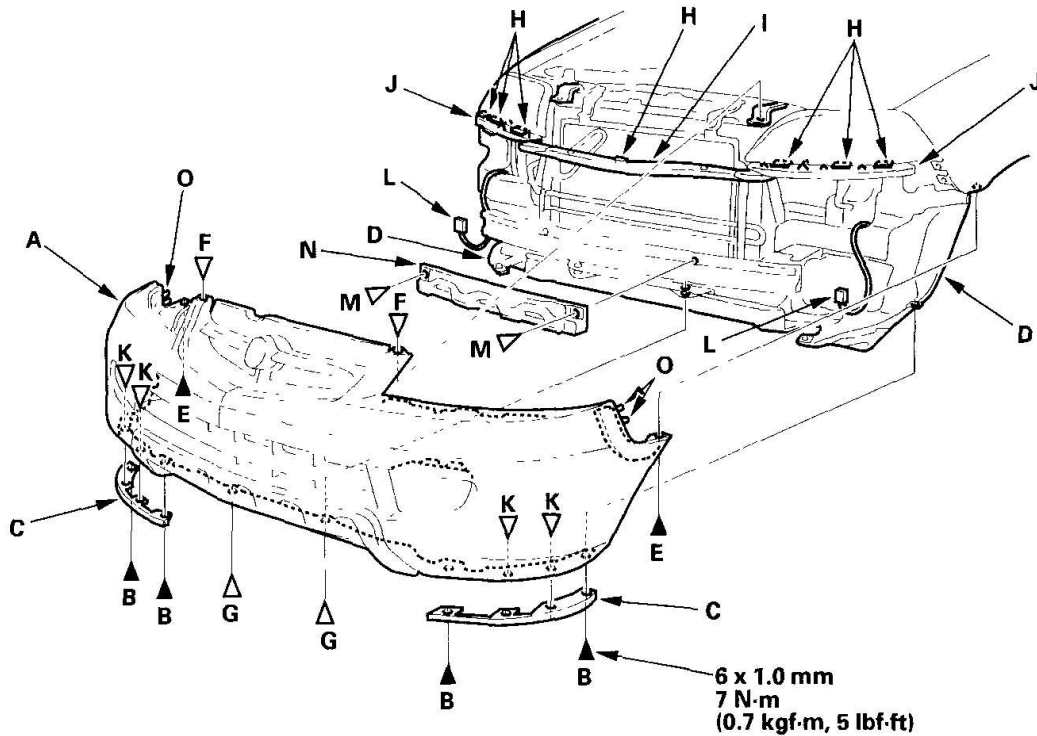
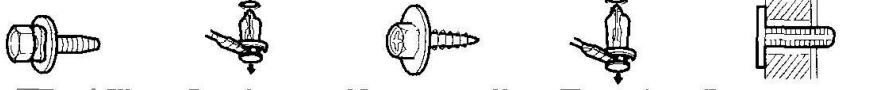
1. Remove the front bulkhead cover (see **FRONT BULKHEAD COVER REPLACEMENT** ).
2. Remove the front bumper (A).
  - 1 Remove the bolts (B) securing both front under spoilers (C), front bumper, and both front inner fenders (D).
  - 2 Remove the screws (E) and clips (F, G).
  - 3 With the help of an assistant, pull the front bumper forward to release the hooks (H) of the center upper beam (I) and corner upper beam (J), then remove the bumper from the body. If necessary, remove the clips (K), then remove the under spoilers.
  - 4 Disconnect both front fog light connectors (L).
  - 5 If necessary, detach the clips (M) and remove the absorber (N).

## 2006 Acura MDX

### 2003-06 ACCESSORIES & EQUIPMENT Bumpers - MDX

#### Fastener Locations

B ▶ : Bolt, 4    F, K ▷ : Clip, 6    E ▶ : Screw, 2    G ▷ : Clip, 2    M ▷ : Clip, 2



G03641747

**Fig. 1: Removing Front Bumper (2003 Model)**

Courtesy of AMERICAN HONDA MOTOR CO., INC.

3. Install the front bumper in the reverse order of removal, and note these items:
  - Make sure the front fog light connectors are plugged in properly.
  - Fit the front bumper side stiffener pins (O) into the holes in each front fender.
  - Make sure the front bumper engages the hooks (of the center and both corner upper beams) on each side securely.
  - Check the clips for damage or stress-whitening, and replace them with new one.
  - Push the clips into place securely.

#### 2004-06 MODELS

#### NOTE:

- Have an assistant help you when removing and installing the front bumper.

- Take care not to scratch the front bumper and body.
- Put on gloves to protect your hands.

1. Remove the front bulkhead cover (see **FRONT BULKHEAD COVER REPLACEMENT** ).

2. Remove the front bumper (A).

-1 Remove the bolts (B) securing both front bumper air spoilers (C), front bumper, and both front inner fenders (D).

-2 Remove the screws (E) and clips (F, G).

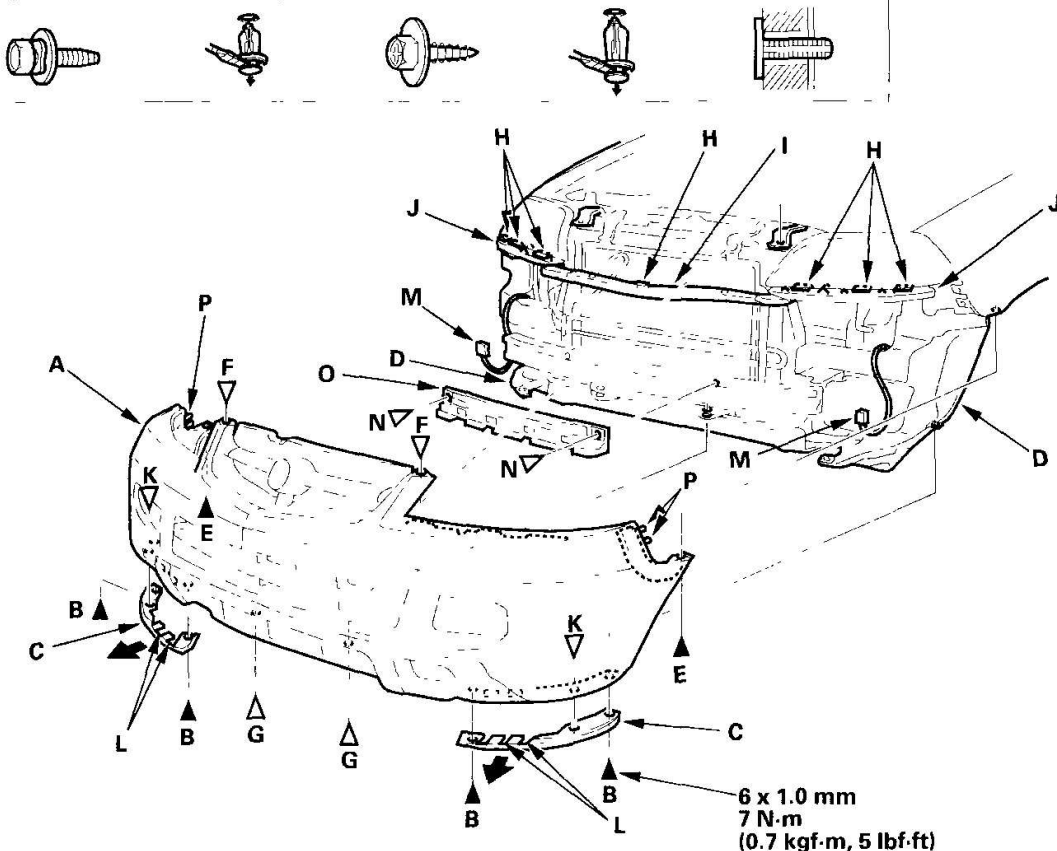
-3 With the help of an assistant, pull the front bumper forward to release the hooks (H) of the center upper beam (I) and corner upper beam (J), then remove the bumper from the body. If necessary, remove the clips (K), and release the hooks (L), then remove the air spoilers.

-4 Disconnect both front fog light connectors (M).

-5 If necessary, detach the clips (N) and remove the absorber (O).

**Fastener Locations**

B ► : Bolt, 4    F, K ▷ : Clip, 4    E ► : Screw, 2    G ▷ : Clip, 2    N ▷ : Clip, 2



**Fig. 2: Removing Front Bumper (2004-06 Models)**  
**Courtesy of AMERICAN HONDA MOTOR CO., INC.**

3. Install the front bumper in the reverse order of removal, and note these items:
  - Make sure the front fog light connectors are plugged in properly.
  - Fit the front bumper side stiffener pins (P) into the holes in each front fender.
  - Make sure the front bumper engages the hooks (of the center and both corner upper beams) on each side securely.
  - Check the clips for damage or stress-whitening, and replace them with new one.
  - Push the clips into place securely.

## **REAR BUMPER REMOVAL/INSTALLATION**

### **Special Tools Required**

KTC trim tool set SOJATP2014

### **2003 MODEL**

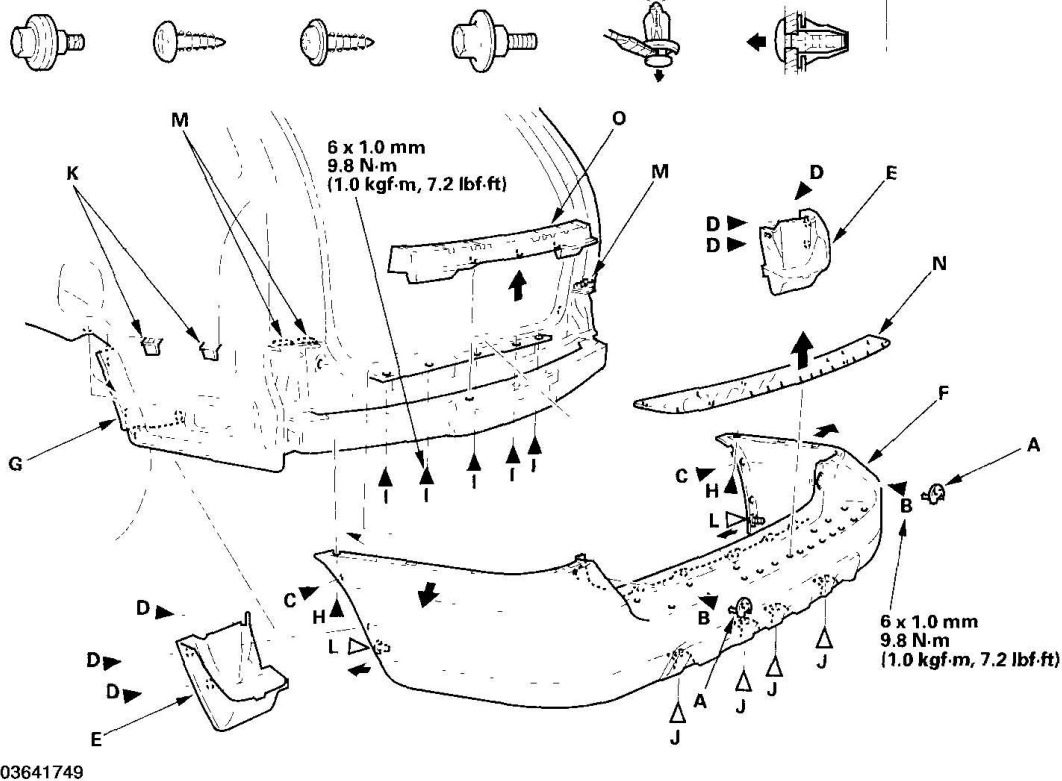
#### **NOTE:**

- **Have an assistant help you when removing and installing the rear bumper.**
- **Take care not to scratch the rear bumper and body.**
- **Use the appropriate tool from the KTC trim tool set to avoid damage when prying components.**
- **Put on gloves to protect your hands.**

1. Remove the rear bumper.
  - 1 Pry out the caps (A), and remove the bolts (B) from each side.
  - 2 Remove screws (C, D), then remove the splash guard (E) securing the rear bumper (F) and rear fender cover (G), and two screws (H) securing the bumper on the body.
  - 3 Remove the bolts (I) from under the rear bumper. Remove the four clips (J) from the lower rear edge of the bumper.
  - 4 With the help of an assistant, pull both side wheel arch portions of the bumper outward to detach them from the side clips (K), and pull them forward to detach the clips (L). Then remove the rear bumper from the hooks (M) by pulling the bumper rearward.
  - 5 If necessary, detach the rear bumper step (N), and remove the absorber (O).

**Fastener Locations**

B ▶ : Bolt, 2 C ▶ : Screw, 2 D, H ▶ : Screw, 8 I ▶ : Bolt, 5 J ▶ : Clip, 4 L ▶ : Clip, 2



**Fig. 3: Removing Rear Bumper (2003 Model)**

Courtesy of AMERICAN HONDA MOTOR CO., INC.

2. Install the rear bumper in the reverse order of removal, and note these items:
  - Make sure the rear bumper engages the side clips and the hooks (under the taillight) on each side securely.
  - Check the clips for damage or stress-whitening, and replace them with new one.
  - Push the clips into place securely.

**Special Tools Required**

KTC trim tool set SOJATP2014

**2004-06 MODELS**

**NOTE:**

- Have an assistant help you when removing and installing the rear bumper.
- Take care not to scratch the rear bumper and body.
- Use the appropriate tool from the KTC trim tool set to avoid damage when

- **Put on gloves to protect your hands.**

**Fig. 4: Removing Rear Bumper (2004-06 Models)**  
**Courtesy of AMERICAN HONDA MOTOR CO., INC.**

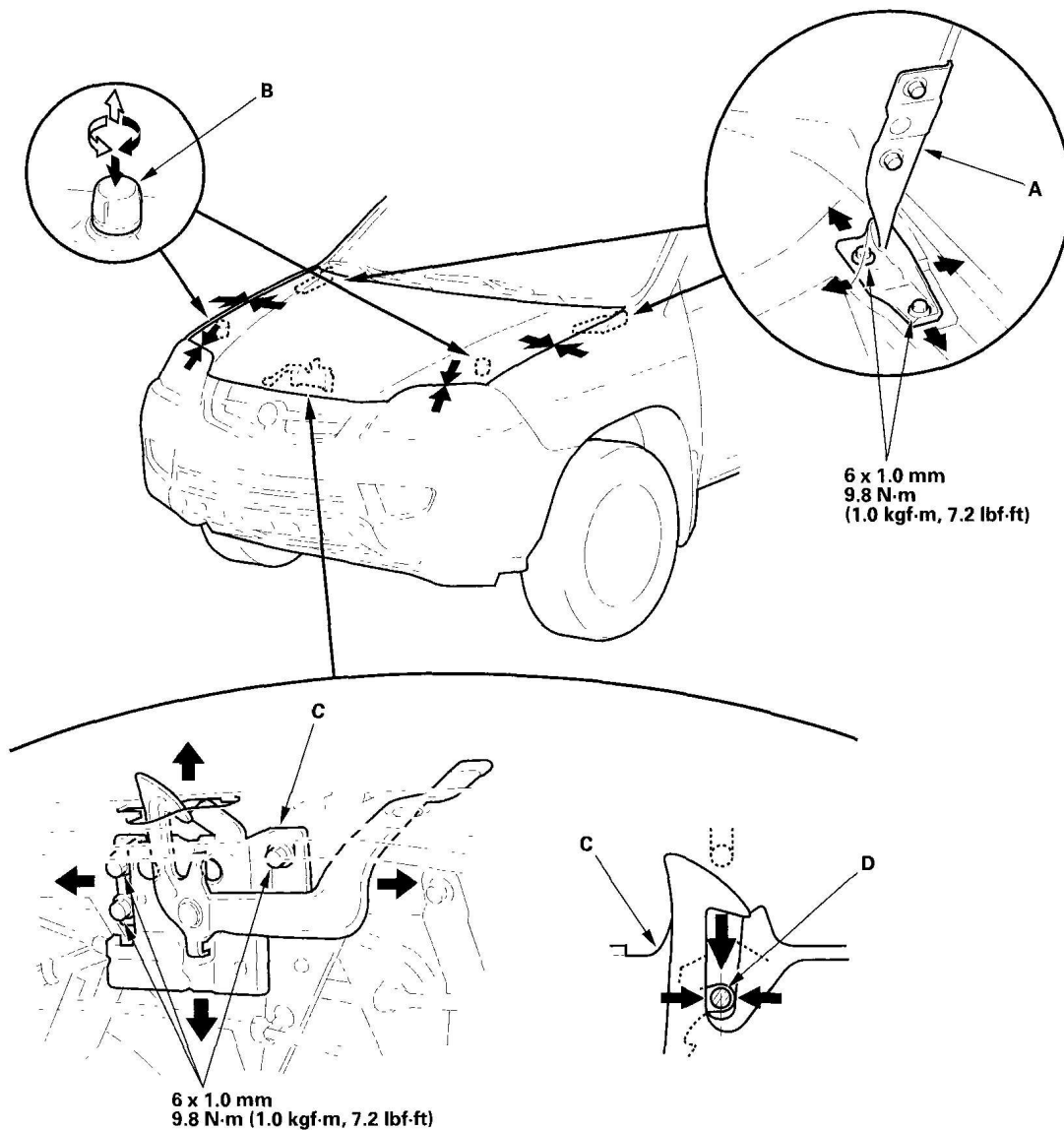
2. Install the rear bumper in the reverse order of removal, and note these items:
  - Make sure the rear bumper engages the side clips and the hooks (under the taillight) on each side

securely.

- Check the clips for damage or stress-whitening, and replace them with new one.
- Push the clips into place securely.

## ADJUSTMENT

1. Remove the support strut from each side of the hood (see **HOOD SUPPORT STRUT REPLACEMENT** ).
2. Slightly loosen each hood hinge bolt.
3. Adjust the hood alignment in this sequence.
  - Adjust the hood right and left, as well as forward and rearward, by using the elongated holes on the hood hinge (A).
  - Turn the hood edge cushions (B), as necessary, to make the hood fit flush with the body at front and side edges.



G03641751

**Fig. 5: Adjusting Hood Alignment In Sequence**  
Courtesy of AMERICAN HONDA MOTOR CO., INC.

4. Adjust the hood latch (C) to obtain the proper height at the forward edge, and move the hood latch right or left until the striker (D) is centered in the hood latch.
5. Tighten the bolts securely.