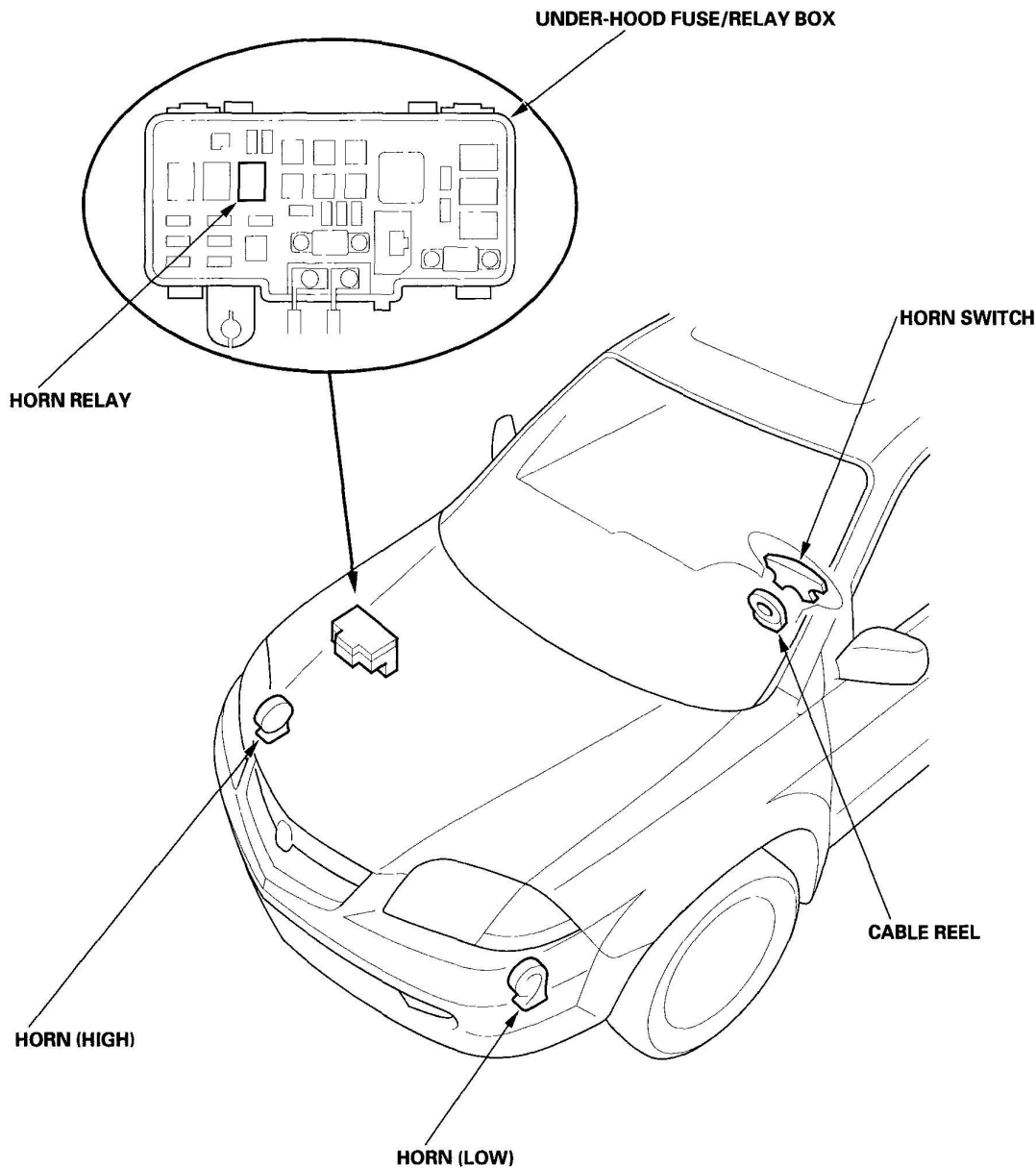


2003-06 ACCESSORIES & EQUIPMENT

Horns - MDX

COMPONENT LOCATION INDEX



The illustration shows '03 model.

G03642204

Fig. 1: Identifying Horns Components
Courtesy of AMERICAN HONDA MOTOR CO., INC.

The illustration shows '03 model.

CIRCUIT DIAGRAM

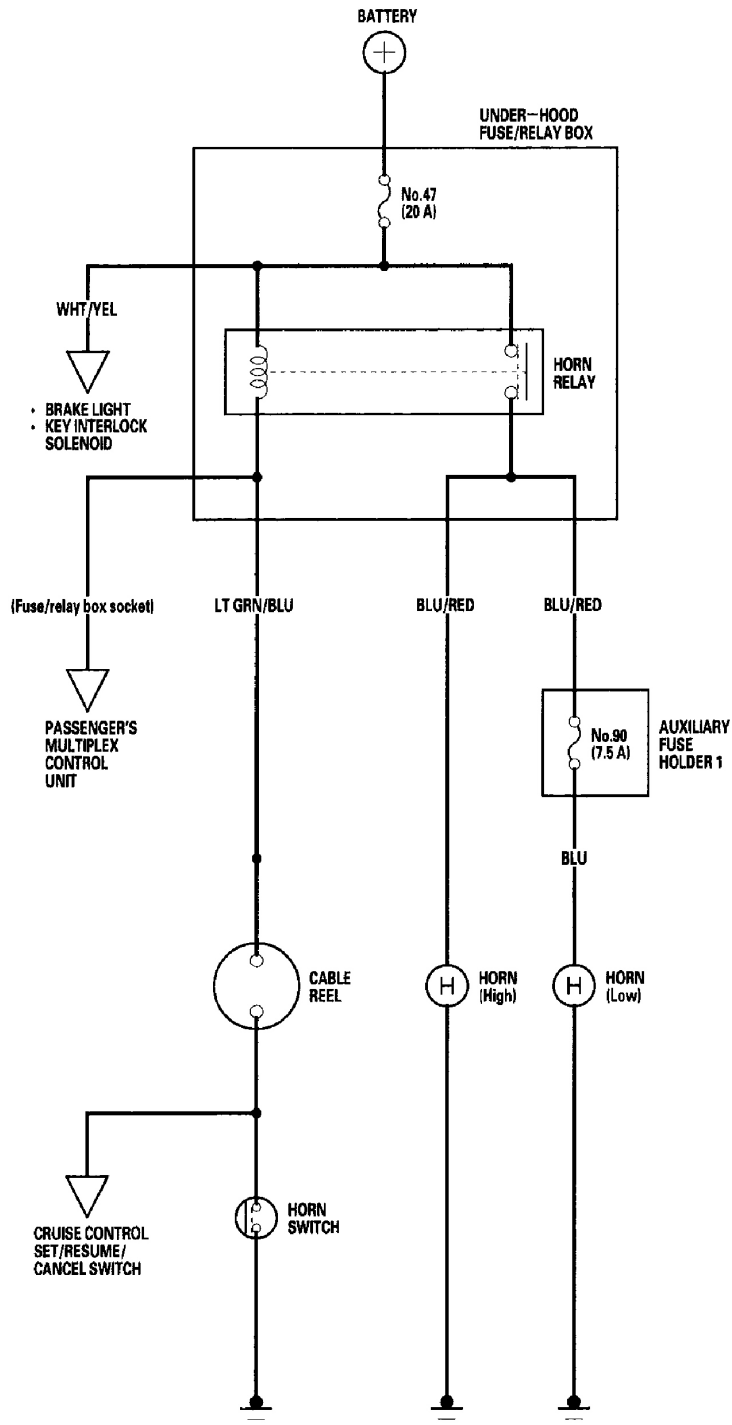
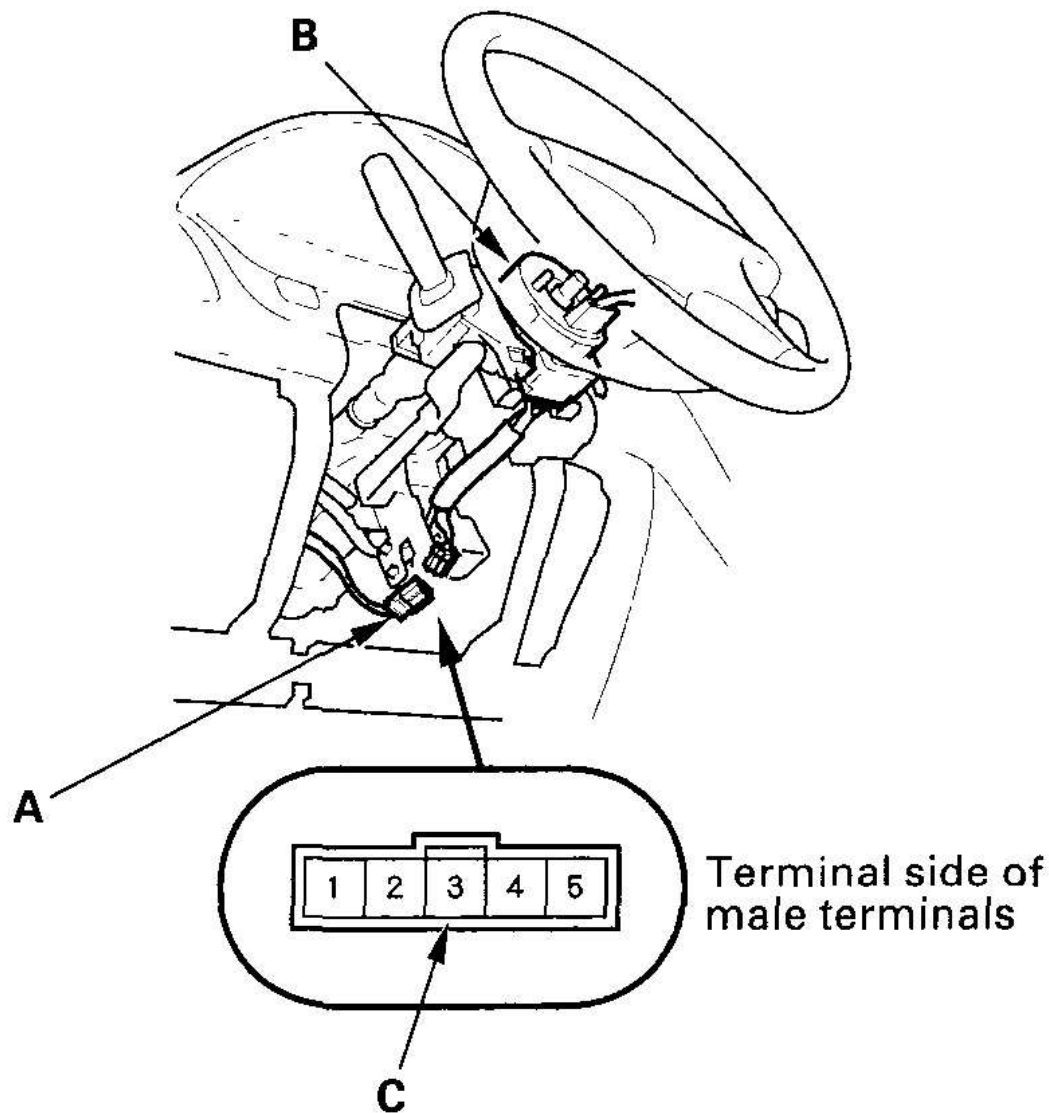


Fig. 2: Horns Circuit Diagram

Courtesy of AMERICAN HONDA MOTOR CO., INC.

HORN SWITCH TEST

1. Remove the dashboard lower cover (see **DASHBOARD LOWER COVER REMOVAL/INSTALLATION**).
2. Remove the steering column covers (see **STEERING COLUMN REMOVAL AND INSTALLATION**).
3. Disconnect the dashboard wire harness B 5P connector (A) from the cable reel (B).



G03642206

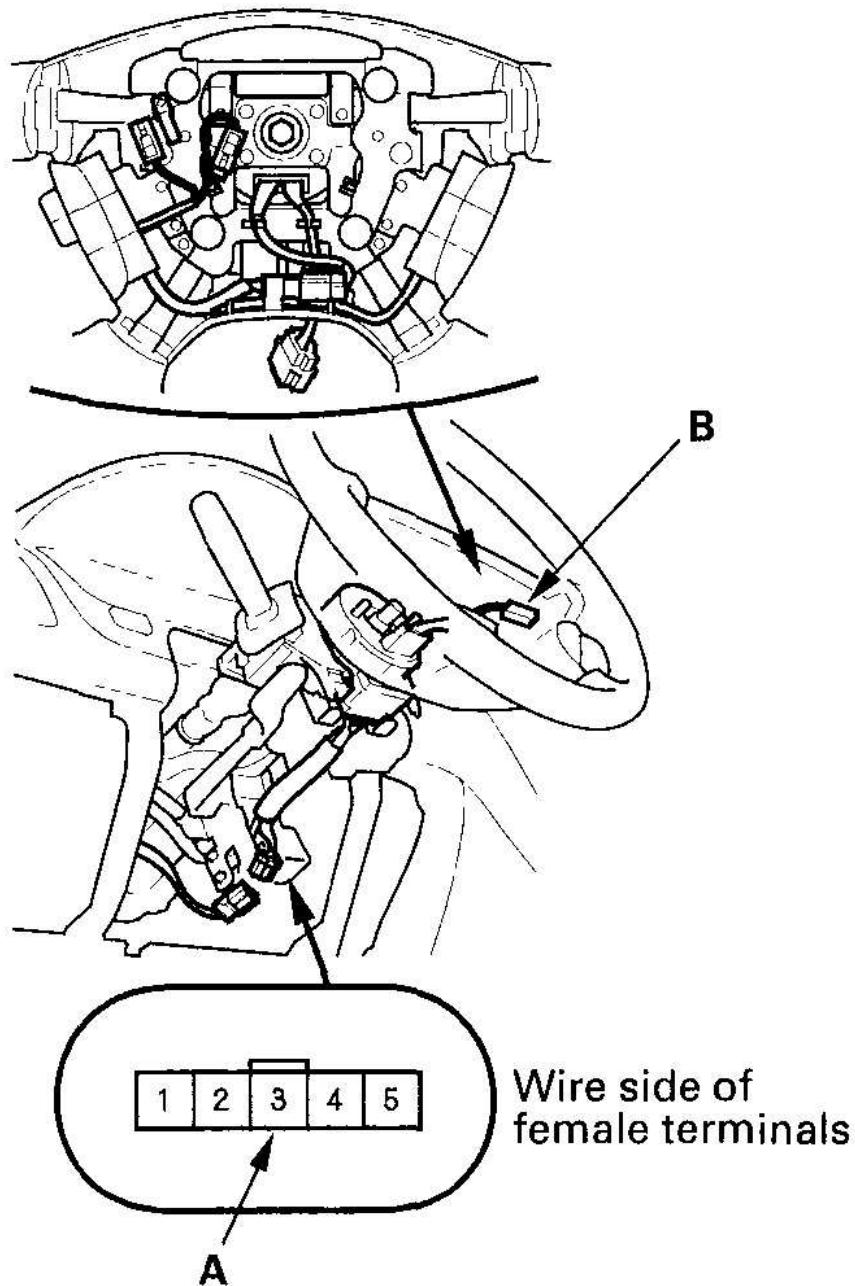
Fig. 3: Disconnecting Dashboard Wire Harness B 5P Connector From Cable Reel
 Courtesy of AMERICAN HONDA MOTOR CO., INC.

4. Connect terminal No. 3 (C) of the dashboard wire harness B 5P connector to ground. The horn should sound.
 - If the horn does not sound, inspect the horn relay circuit.
 - If the horn sounds, go to step 5.
5. Check for continuity between the cable reel No. 2 terminal and body ground with the horn switch pressed.

2006 Acura MDX

2003-06 ACCESSORIES & EQUIPMENT Horns - MDX

- If there is continuity, the switch is OK.
 - If there is no continuity, go to step 6.
6. Remove the driver's airbag assembly (see **DRIVER'S AIRBAG REPLACEMENT**).
 7. Check for continuity between the cable reel No. 3 terminal (A) and the horn switch positive terminal (B).
 - If there is no continuity, check for continuity of the radio remote switch harness. If the harness is OK, replace the cable reel (see **CABLE REEL REPLACEMENT**) and check for proper operation.
 - If there is continuity, go to step 8.



G03642207

Fig. 4: Checking For Continuity Between Cable Reel No. 3 Terminal And Horn Switch Positive Terminal
Courtesy of AMERICAN HONDA MOTOR CO., INC.

8. Check for continuity between the center of the steering column and ground.
 - If there is continuity, replace the airbag.
 - If there is no continuity, replace the steering column.

HORN TEST/REPLACEMENT

1. Remove the inner fender (see **FRONT INNER FENDER REPLACEMENT**).
2. Disconnect the 1P connector (A) from the horn (B).

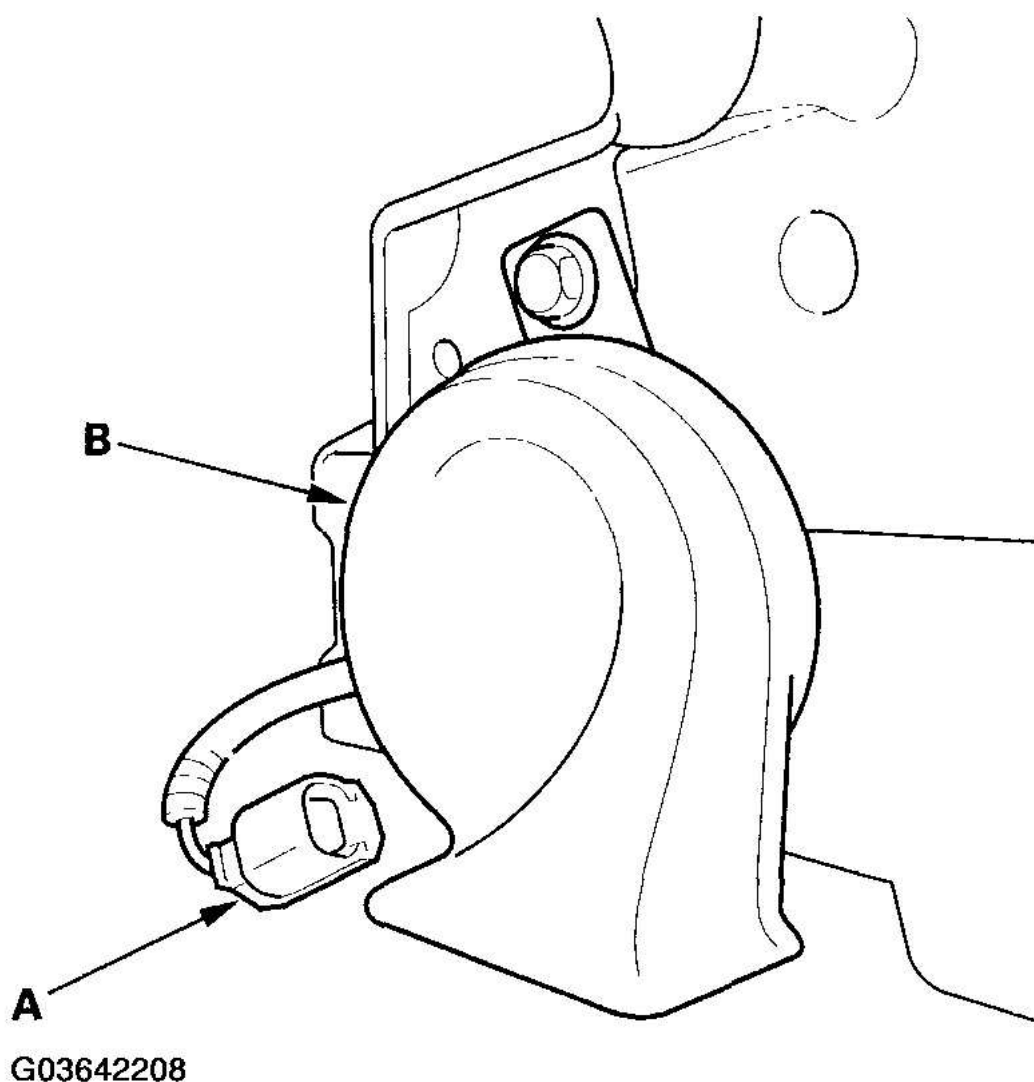


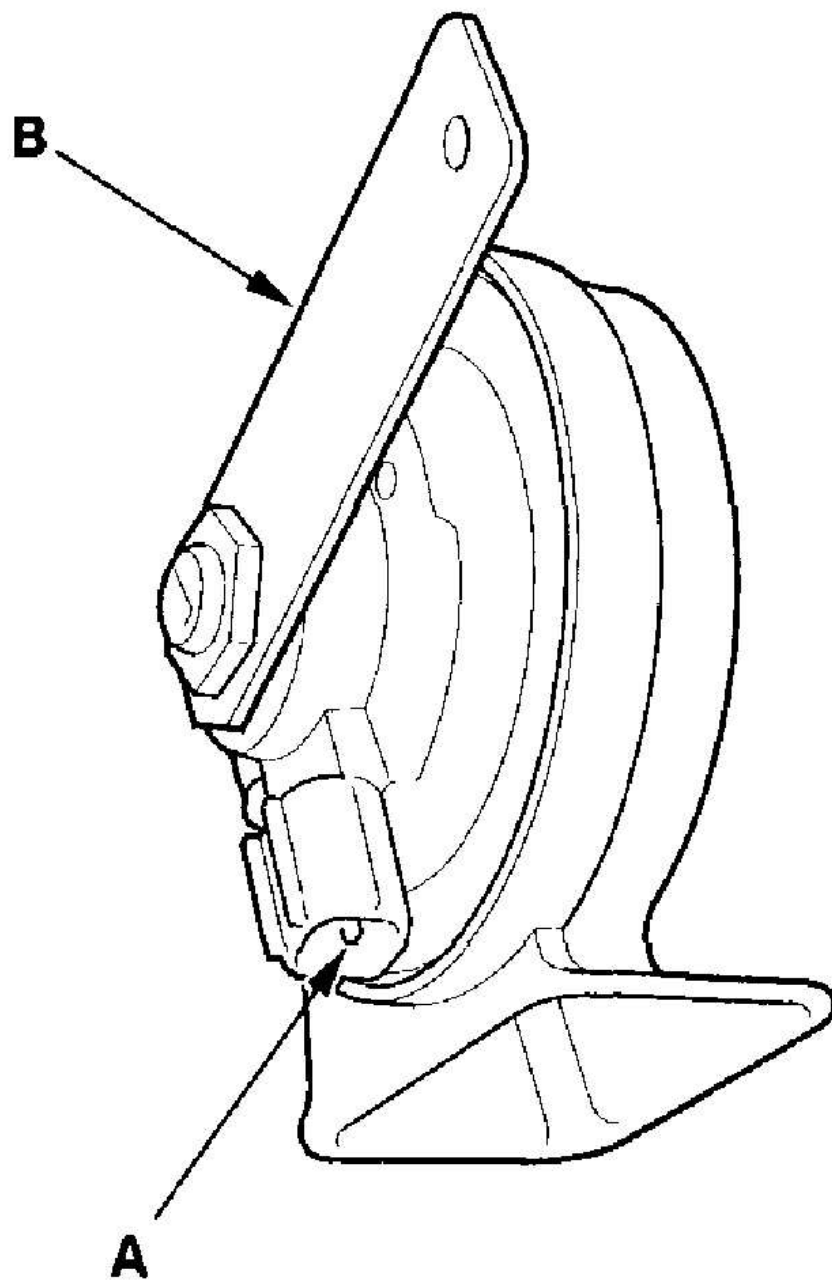
Fig. 5: Disconnecting 1P Connector From Horn

2006 Acura MDX
2003-06 ACCESSORIES & EQUIPMENT Horns - MDX

Courtesy of AMERICAN HONDA MOTOR CO., INC.

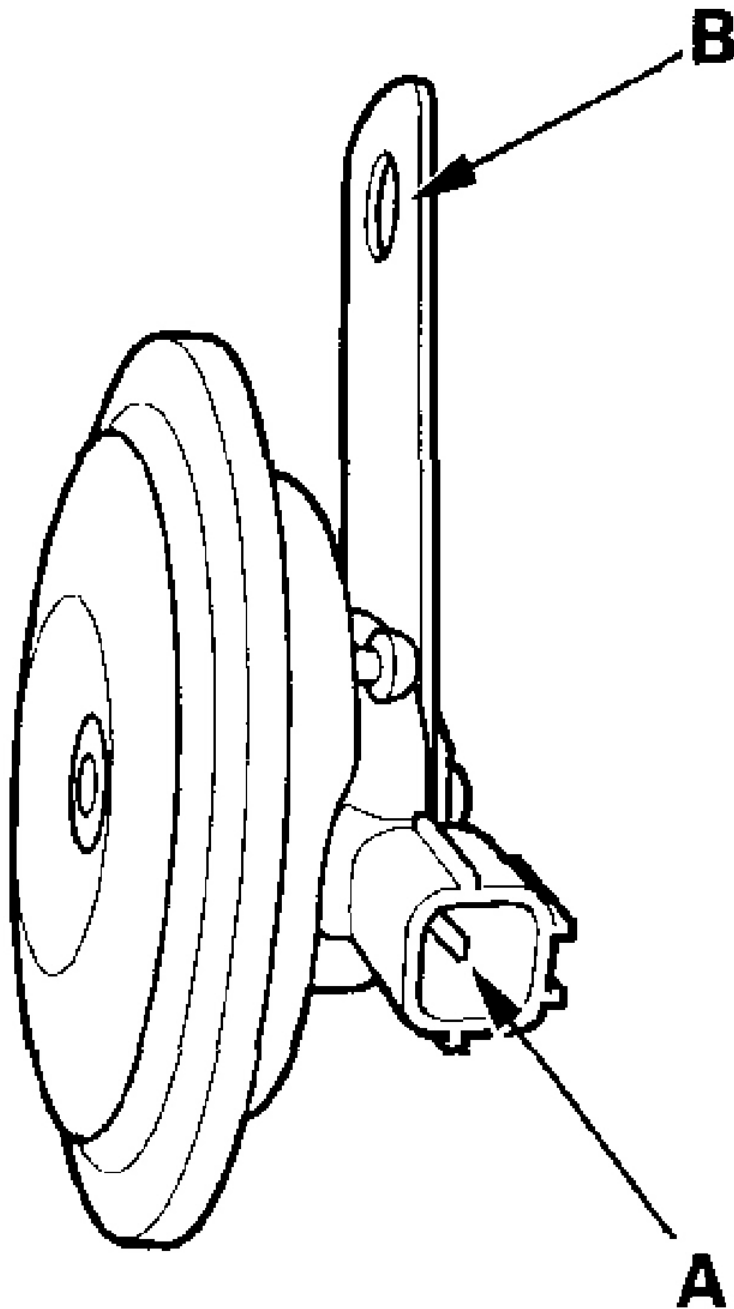
NOTE: The illustration shows the low horn of the '03 model.

3. Remove the mounting bolt and the horn.
4. Test the horn by connecting battery power to the terminal (A) and grounding to the bracket (B). The horn should sound.



G03642209

Fig. 6: Connecting Battery Power To Terminal And Grounding To Test Horn ('03 Model)
Courtesy of AMERICAN HONDA MOTOR CO., INC.



G03642210

Fig. 7: Connecting Battery Power To Terminal And Grounding To Test Horn ('04-'06 Model)
Courtesy of AMERICAN HONDA MOTOR CO., INC.

5. If it fails to sound, replace it.