

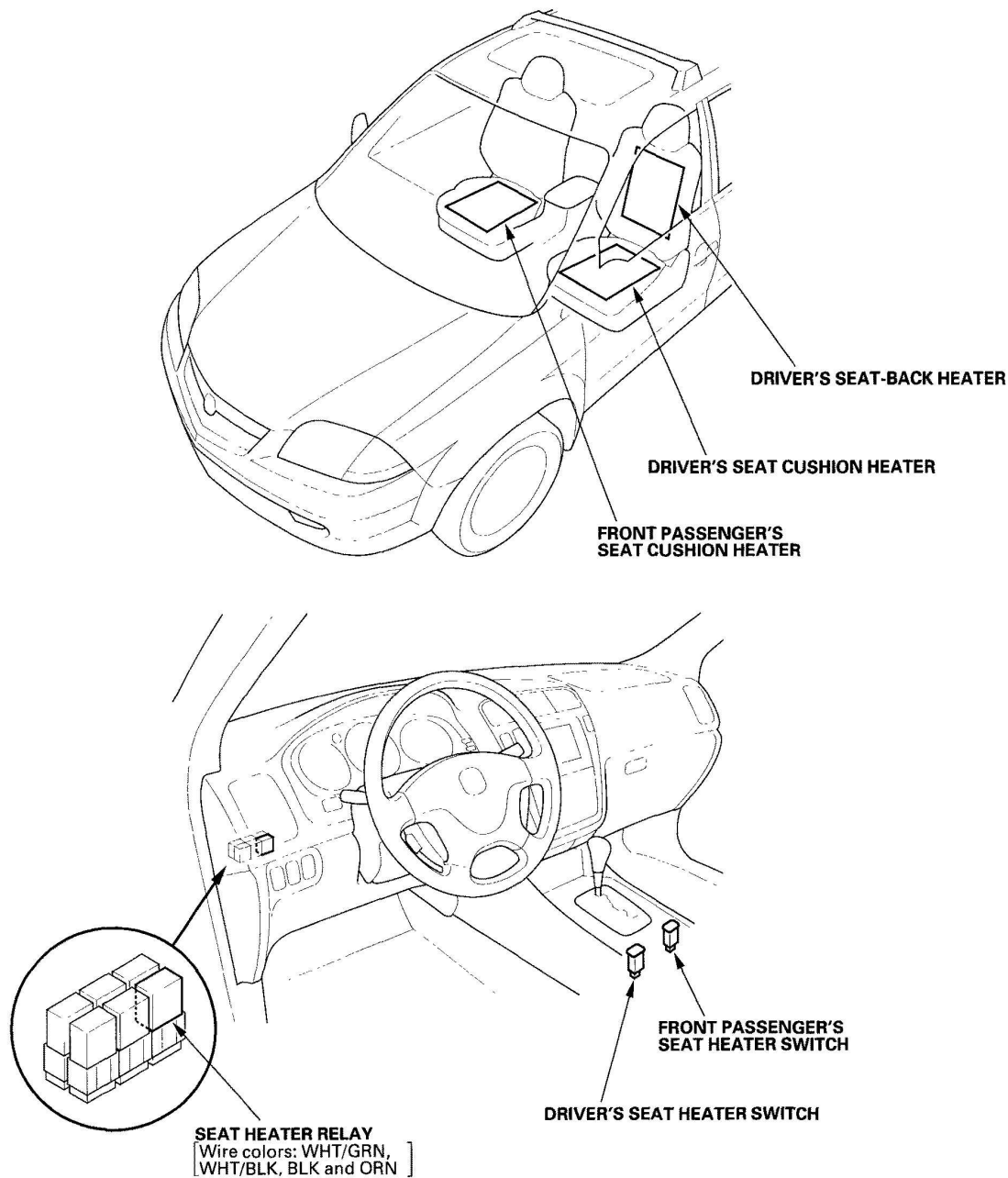
2006 Acura MDX

2003-06 ACCESSORIES & EQUIPMENT Seat Heaters - MDX

2003-06 ACCESSORIES & EQUIPMENT

Seat Heaters - MDX

COMPONENT LOCATION INDEX



The illustration shows '03 model.

G03642284

Fig. 1: Identifying Seat Heaters Components

Courtesy of AMERICAN HONDA MOTOR CO., INC.

The illustration shows '03 model.

CIRCUIT DIAGRAM

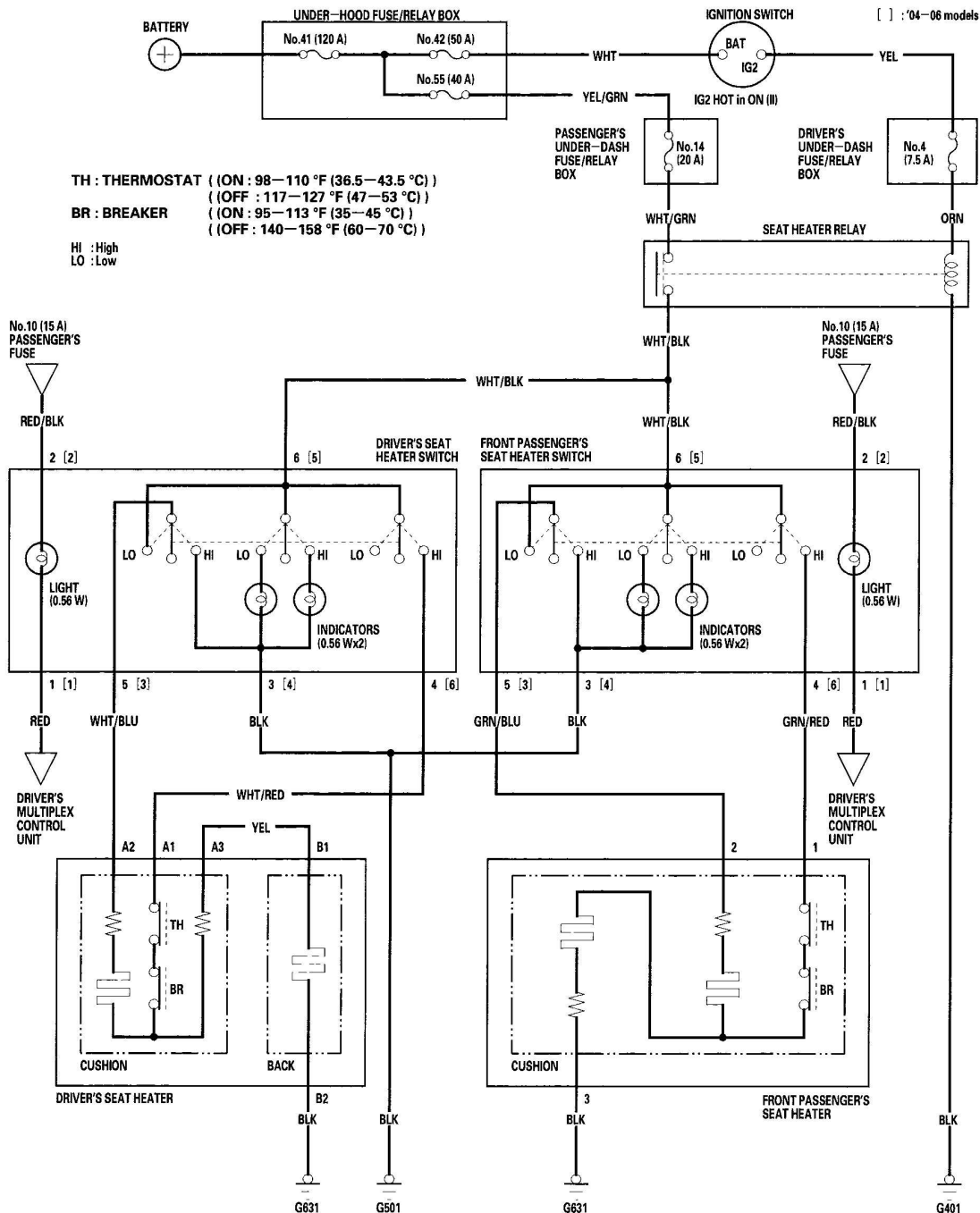


Fig. 2: Circuit Diagram - Seat Heaters

Courtesy of AMERICAN HONDA MOTOR CO., INC.

SEAT HEATER TEST

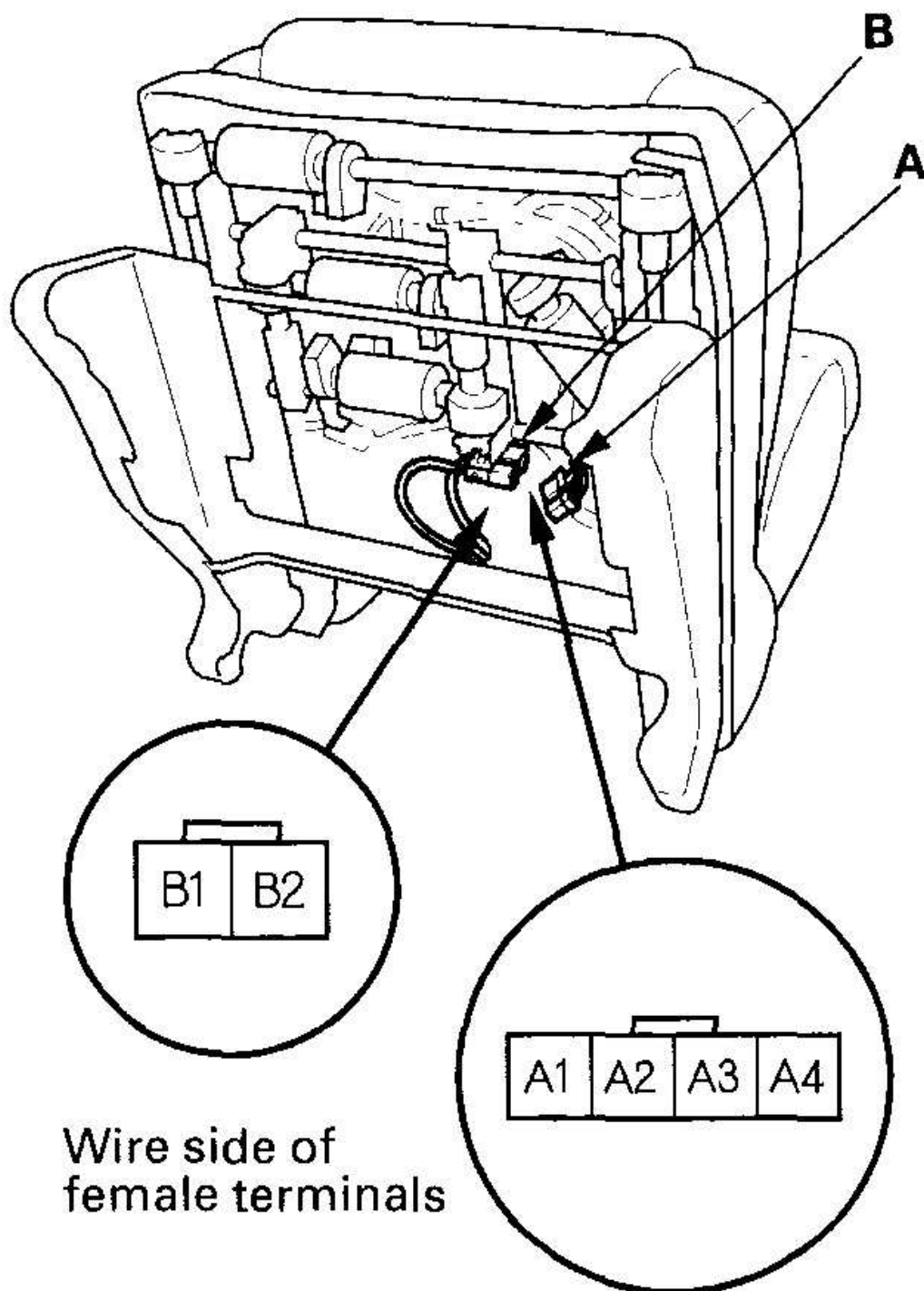
DRIVER'S SEAT

NOTE: When the seat heater is set on HI, the thermo switch opens at a specified temperature.

1. Remove the driver's seat (see **FRONT SEAT REMOVAL/INSTALLATION**).
2. Disconnect the 4P connector (A) and 2P connector (B) from the seat heater.

2006 Acura MDX

2003-06 ACCESSORIES & EQUIPMENT Seat Heaters - MDX



Wire side of
female terminals

G03642286

Fig. 3: Disconnecting 4P Connector And 2P Connector From Seat Heater
Courtesy of AMERICAN HONDA MOTOR CO., INC.

3. Seat Cushion Heater:

Check for continuity between the A1 and A2 terminals, and A1 and A3 terminals of the 4P connector A. There should be continuity.

4. Seat-back Heater:

Check for continuity between the B1 and B2 terminals of the 2P connector B. There should be continuity.

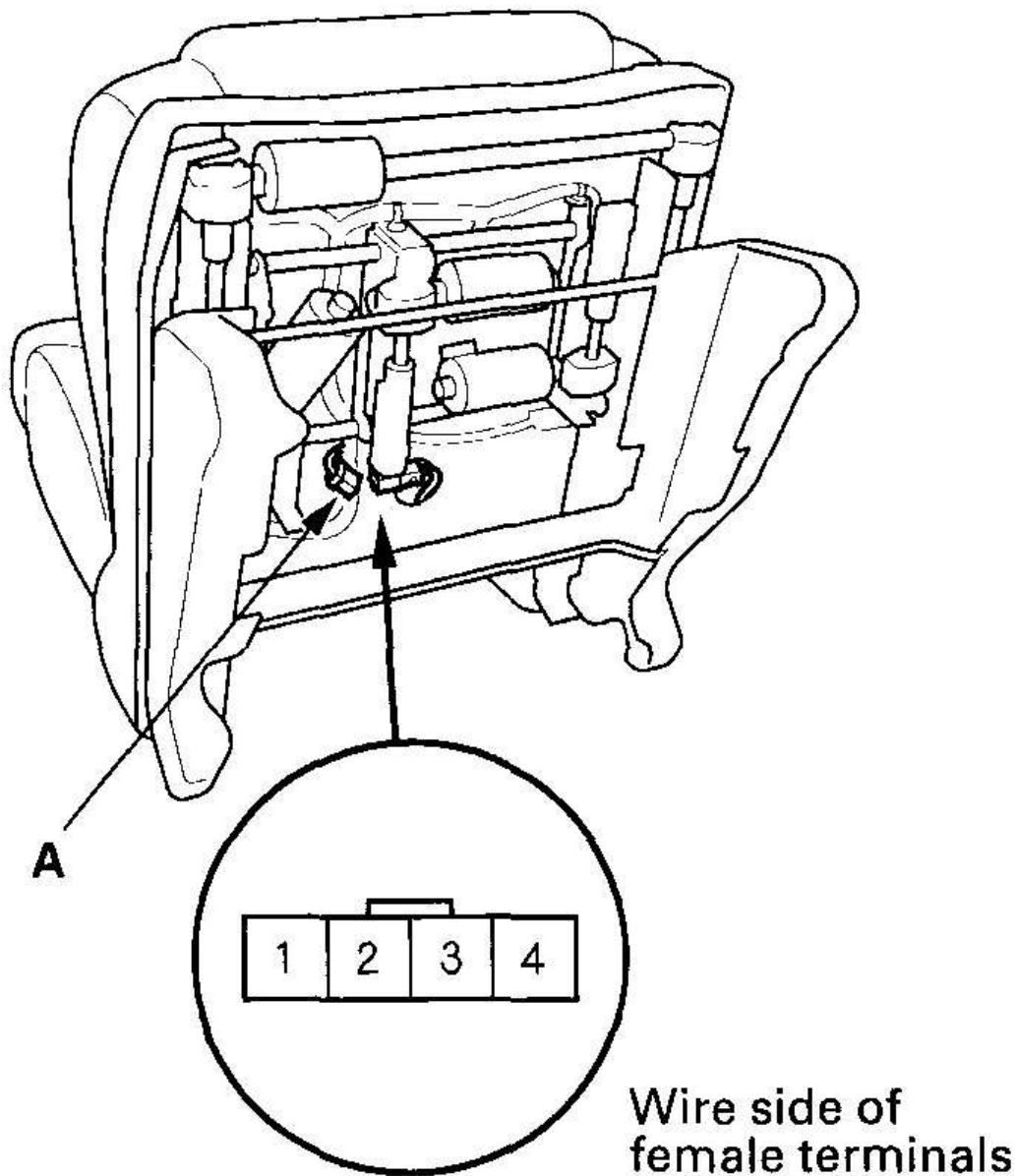
5. If the continuity is not as specified, replace the seat heater.

6. If only the seat-back heater fails to warm-up, check for an open in the YEL wire of the driver's seat wire harness.

FRONT PASSENGER'S SEAT

NOTE: **When the seat heater is set on HI, the thermo switch opens at a specified temperature.**

1. Remove the passenger's seat (see **FRONT SEAT REMOVAL/INSTALLATION**).
2. Disconnect the 4P connector (A) from the seat heater.



G03642287

Fig. 4: Disconnecting 4P Connector From Seat Heater
Courtesy of AMERICAN HONDA MOTOR CO., INC.

3. Check for continuity between the No. 1 and No. 2 terminals, and No. 2 and No. 3 terminals of the 4P connector. There should be continuity.

2006 Acura MDX

2003-06 ACCESSORIES & EQUIPMENT Seat Heaters - MDX

4. If the continuity is not as specified, replace the seat heater.

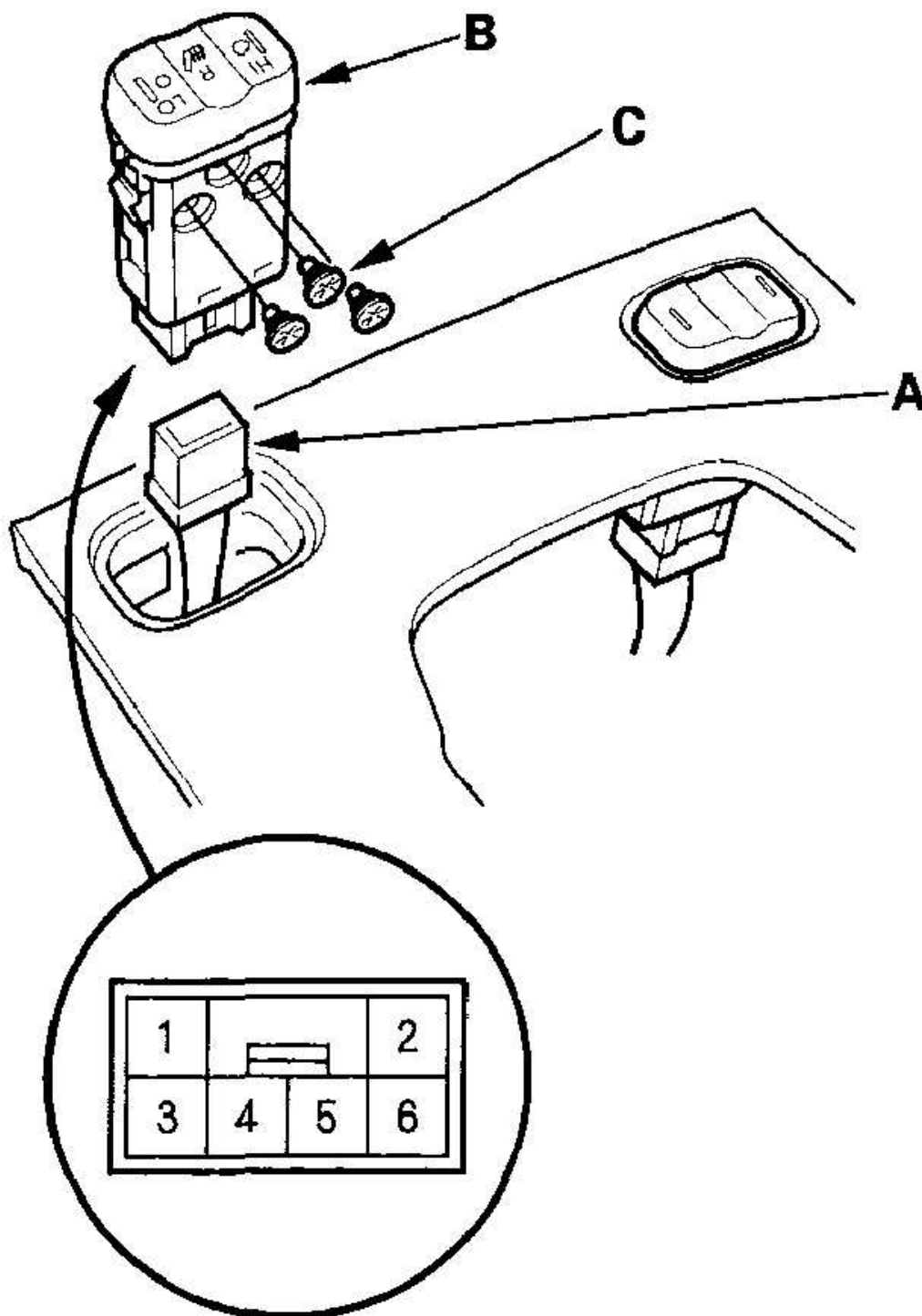
SWITCH TEST/REPLACEMENT

'03 MODEL

1. Remove the center console (see **CENTER CONSOLE REMOVAL/INSTALLATION**).
2. Disconnect the 6P connector (A) from the seat heater switch (B), and remove the switch.

2006 Acura MDX

2003-06 ACCESSORIES & EQUIPMENT Seat Heaters - MDX



G03642288

Fig. 5: Disconnecting 6P Connector From Seat Heater Switch
 Courtesy of AMERICAN HONDA MOTOR CO., INC.

3. Check for continuity between the terminal in each switch position according to **Fig. 6**.

Terminal Position		1		2	3		6	4	5
ON	HIGH				○	—	—	—	○
	LOW	○	○	○	○	○	○	○	
OFF		○	○	○					

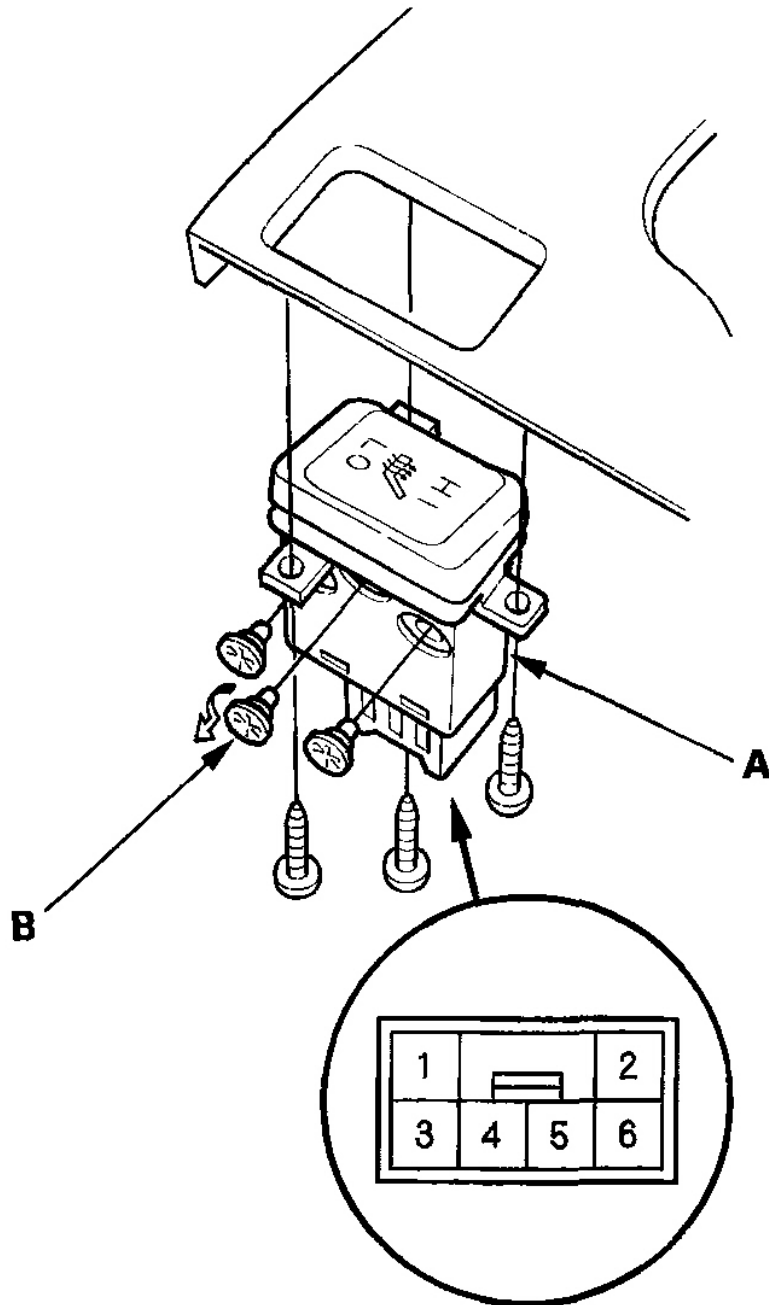
G03642289

Fig. 6: Checking Continuity Between Terminals In Each Switch Position Chart
 Courtesy of AMERICAN HONDA MOTOR CO., INC.

4. If the continuity is not as specified, replace the illumination bulbs (C) or the switch.

'04-06 MODELS

1. Remove the center console (see **CENTER CONSOLE REMOVAL/INSTALLATION**).
2. Disconnect the 6P connector from the seat heater switch (A).



G03642290

Fig. 7: Disconnecting 6P Connector From Seat Heater Switch
Courtesy of AMERICAN HONDA MOTOR CO., INC.

3. Remove the screws and seat heater switch.

4. Check for continuity between the terminal in each switch position according to **Fig. 8**.

Terminal Position		1		2	4		3	5	6
ON	HIGH				○	—	○		
	LOW	○	○	○	○	○	—	○	○
OFF		○	○	○					

G03642291

Fig. 8: Checking Continuity Between Terminals In Each Switch Position Chart
 Courtesy of AMERICAN HONDA MOTOR CO., INC.

5. If the continuity is not as specified, replace the illumination bulbs (B) or the switch.